



# Shearing

Sheet Metal Forming Solution



[www.fintekwell.com](http://www.fintekwell.com)

# HH



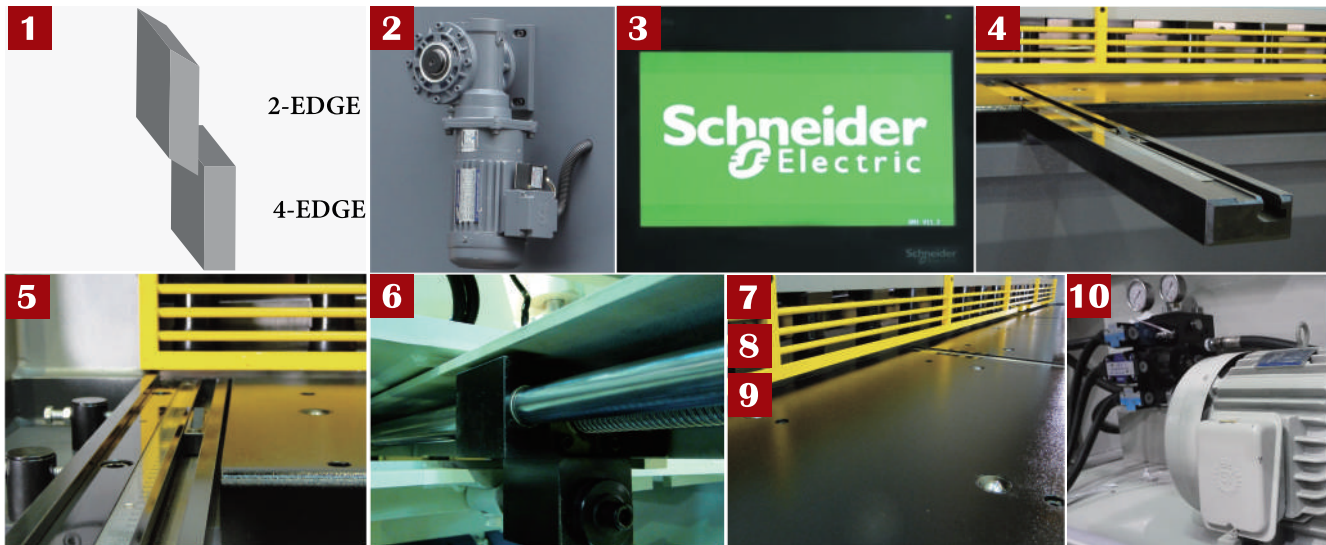
## HH-1065

### HEAVY DUTY HYDRAULIC SHEARING MACHINE

MODEL		HH-0865	HH-08100	HH-1065	HH-10100	HH-1365
Cutting Capacity	Mild Steel (mm)	6.5 x 2540	10 x 2540	6.5 x 3100	10 x 3100	6.5 x 4080
	Stainless Steel (mm)	4.5 x 2540	6.5 x 2540	4.5 x 3100	6.5 x 3100	4.5 x 4080
Strokes per minute (S.P.M.)		18	16	16	14	12
Hold-downs	Numbers	16	16	18	18	23
	Pressure	12 tons	24 tons	15 tons	29 tons	20 tons
Front Supporter		1000 mm	1000 mm	1000 mm	1000 mm	1000 mm
NC servo back gauge		800 mm	800 mm	800 mm	800 mm	800 mm
Top blade		Automatic blade clearance adjustment				
Top blade rake angle		Fixed rake angle				
Motor		20 HP	25 HP	20 HP	25 HP	25 HP
Oil-tank Capacity		200L	300L	200L	300L	300L
Shipping Weight		5800 kgs	8500 kgs	6200 kgs	9500 kgs	10500 kgs
Approx size of cas		3660 x 1920 x 2150 mm	3650 x 2000 x 2200 mm	4220 x 1920 x 2150 mm	4300 x 2000 x 2200 mm	5280 x 2000 x 2200 mm

• All specifications & design are subject to change without prior notice.

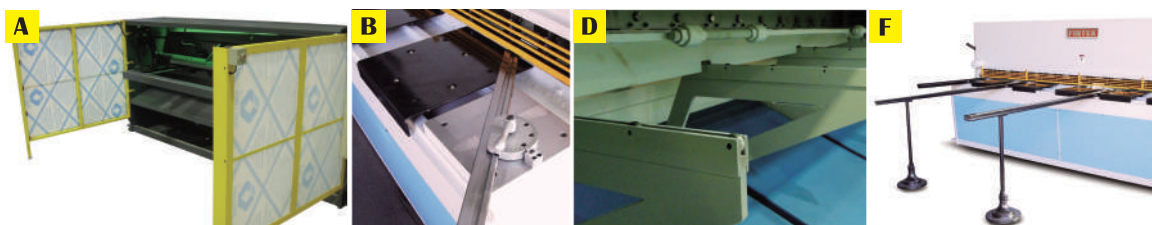
## STANDARD ACCESSORIES



- 1 High grade, high carbon/chrome 2-edge upper blade and 4-edge bottom blade.
- 2 Automatic blade clearance adjustment
- 3 “Schneider” TOUCH 7” screen NC controller
- 4 Front supporting arm with dual scale.
- 5 Side gauge with dual scale.
- 6 NC servo motorized back gauge.
- 7 Front feeding worktable with rollers.
- 8 Full length finger guard.
- 9 Hydraulic independent Hold-Downs.
- 10 Overload protected hydraulic system.
- 11 Foot pedal with safety protection.
- 12 Full electrics & cabinet with operation panel.

## ACCESSORIES

### OPTIONAL ACCESSORIES



- A CE conformity.
- B Angle gauge.
- C Upgrade bigger motor increased strokes
- D Hydraulic or Pneumatic sheet supporter.
- E Back gauge with lifting function.
- F Extended front supporting arm, length 1.5/ 2.0/ 3.0 meters.
- G Extended side gauge, length 1.5/ 2.0/ 3.0 meters.

# H



## H-0845



## H-0435

## HYDRAULIC SHEARING MACHINE

MODEL		H-0435	H-0535	H-0635	H-0835	H-1035	H-1335	H-0445	H-0545
Cutting Capacity	Mild Steel (mm)	3.5 x 1320	3.5 x 1580	3.5 x 2080	3.5 x 2540	3.5 x 3100	3.5 x 4080	4.5 x 1320	4.5 x 1580
	Stainless Steel (mm)	2.2 x 1320	2.2 x 1580	2.2 x 2080	2.2 x 2540	2.2 x 3100	2.2 x 4080	3.5 x 1320	3.5 x 1580
Strokes per minute (S.P.M.)		35 - 47	32 - 44	28 - 40	26 - 36	24 - 34	16 - 24	30 - 42	28 - 40
Hold-downs	Numbers	9	10	12	16	18	23	9	10
	Pressure	2.5 tons	3.5 tons	4.2 tons	6.7 tons	8.2 tons	9.2 tons	3.2 tons	4.5 tons
Gauge range	Front	1000mm	1000mm	1000mm	1000mm	1000mm	1000mm	1000mm	1000mm
	Back	600mm	600mm	600mm	600mm	600mm	600mm	600mm	600mm
Top blade		Hydraulic adjustment rake angle							
Top blade rake angle		1/2 - 2°	1/2 - 2°	1/2 - 2°	1/2 - 2°	1/2 - 2°	1/2 - 2°	1/2 - 2°	1/2 - 2°
Motor		7.5 HP	7.5 HP	7.5 HP	10 HP	10 HP	15 HP	10 HP	10 HP
Oil-tank Capacity		25 gallons	30 gallons	35 gallons	40 gallons	40 gallons	40 gallons	25 gallons	30 gallons
Shipping Weight		2000 kgs	2380 kgs	2700 kgs	3480 kgs	3850 kgs	5400 kgs	2450 kgs	2550 kgs
Approx size of cas (mm)		2250 x 1150 1650	2450 x 1150 1650	3000 x 1200 1650	3500 x 1250 1650	4100 x 1250 1650	5120 x 1500 1800	2250 x 1300 1650	2500 x 1300 1650

MODEL		H-0645	H-0845	H-1045	H-1345	H-0465	H-0565	H-0665	
Cutting Capacity	Mild Steel (mm)	4.5 x 2080	4.5 x 2540	4.5 x 3100	4.5 x 4080	6.5 x 1320	6.5 x 1580	6.5 x 2080	
	Stainless Steel (mm)	3.5 x 2080	3.5 x 2540	3.5 x 3100	3.5 x 4080	4.5 x 1320	4.5 x 1580	4.5 x 2080	
Strokes per minute (S.P.M.)		24 - 36	22 - 32	20 - 30	16 - 24	30 - 42	28 - 40	24 - 36	
Hold-downs	Numbers	12	16	18	23	9	10	12	
	Pressure	5.6 tons	7.8 tons	9.6 tons	10.1 tons	3.2 tons	4.5 tons	5.6 tons	
Gauge range	Front	1000mm	1000mm	1000mm	1000mm	1000mm	1000mm	1000mm	
	Back	600mm	600mm	600mm	600mm	600mm	600mm	600mm	
Top blade		Hydraulic adjustment rake angle + blade clearance manual adjustor							
Top blade rake angle		1/2 - 2°	1/2 - 2°	1/2 - 2°	1/2 - 2°	1/2 - 2°	1/2 - 2°	1/2 - 2°	
Motor		10 HP	15 HP	15 HP	20 HP	15 HP	15 HP	15 HP	
Oil-tank Capacity		35 gallons	40 gallons	40 gallons	40 gallons	30 gallons	30 gallons	35 gallons	
Shipping Weight		3050 kgs	3850 kgs	4700 kgs	6640 kgs	2600 kgs	2900 kgs	3250 kgs	
Approx size of cas (mm)		3100 x 1300 1650	3550 x 1400 1650	4200 x 1400 1650	5100 x 1700 1880	2250 x 1400 1650	2550 x 1450 1650	3150 x 1450 1650	



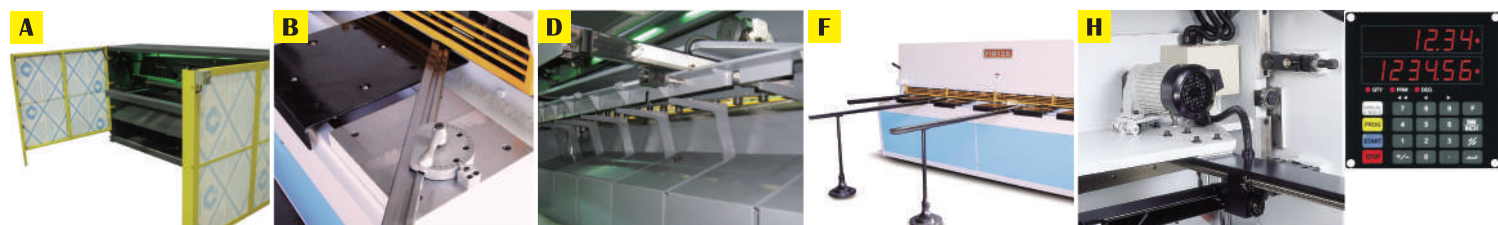
## STANDARD ACCESSORIES



- 1 High grade, high carbon / chrome 2-edge upper blade and 4-edge bottom blade.
- 2 Blade clearance (Gap) adjustor device. (Exclude: H-0435/0535/0635/0835/1035/1335)
- 3 Hydraulic rake angle adjustment.
- 4 Front supporting arm with front setter.
- 5 Side gauge with dual scale.
- 6 Front feeding worktable with rollers.
- 7 Manual back gauge 600mm.
- 8 Full length finger guard.
- 9 Hydraulic independent Hold-Downs.
- 10 Overload protected hydraulic system.
- 11 Foot pedal with safety protection.
- 12 Full electrics & cabinet with operation panel.

## ACCESSORIES

### OPTIONAL ACCESSORIES



- A CE conformity.
- B Angle gauge.
- C Upgrade to bigger motor to increased strokes.
- D Hydraulic sheet supporter.
- E Back gauge with lifting function.
- F Extended front supporting arm, length 1.5/ 2.0 / 3.0 meters.
- G Extended side gauge, length 1.5/ 2.0/ 3.0 meters.
- H NC power back gauge 800 mm with M15S controller.

**F/A/P**



**A-5216**



**F-5216**



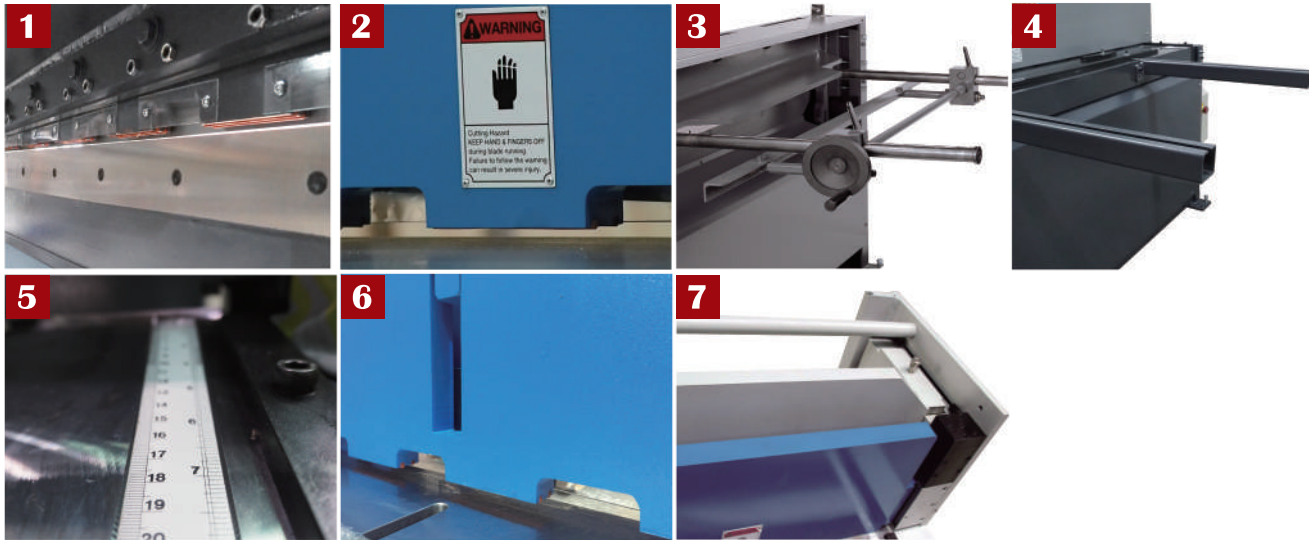
**FOOT SHEAR / AIR SHEAR / COMPACT HYDRAULIC SHEAR**

**P-5210**



**P-12010**

## STANDARD ACCESSORIES

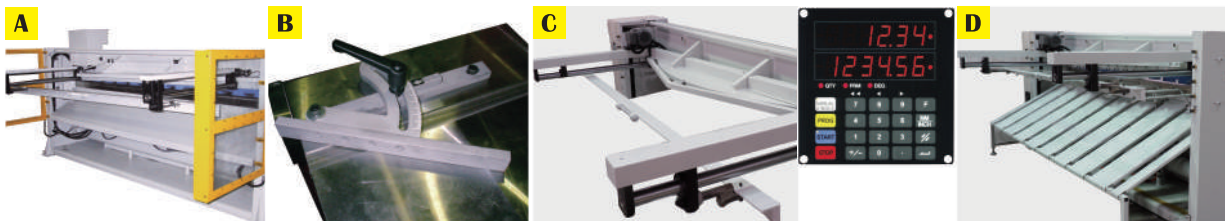


High carbon, high chrome alloy-tool steel blades.  
(4-Edge bottom blade except F-5216 & P-5214  
& A-5216, single-edge bottom blade for O-5216  
& P-5214 & A-5216, 2-edge upper blade)

- 1** Front finger guard.
- 2** Manual back gauge 600mm.
- 3** Front supporting arm
- 4** Front supporting arm
- 5** Side gauge on worktable.
- 6** Spring actuated holddowns ensure even pressure.  
(Except for P-10010 & P-12010)
- 7** Hydraulic hold down system for P-12010 & P-10010  
to clamp workpiece tightly.
- 8** Full hydraulic system and safety overload  
protection system (Hydraulic shear only).

## ACCESSORIES

### OPTIONAL ACCESSORIES



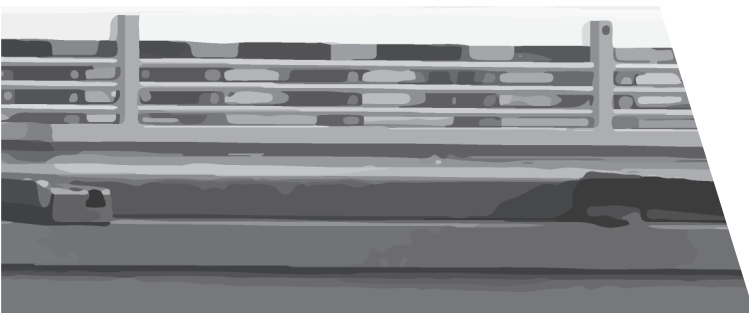
- A** CE conformity.
- B** Angle gauge.
- C** NC power back gauge 800mm with M15S controller.
- D** Hydraulic or Pneumatic sheet supporter.

**FOOT SHEAR / AIR SHEAR / COMPACT HYDRAULIC SHEAR**

MODEL	F-5216	A-5216	P-5214	P-5210	P-6014	P-6010
Capacity mild steel	1.6mm x 1320mm 16GA x 52"	1.6mm x 1320mm 16GA x 52"	2.0mm x 1320mm 14GA x 52"	3.5mm x 1320mm 10GA x 52"	2.0mm x 1550mm 14GA x 60"	3.5mm x 1550mm 10GA x 60"
Capacity stainless steel	0.9mm x 1320mm 20GA x 52"	0.9mm x 1320mm 20GA x 52"	1.2mm x 1320mm 18GA x 52"	2.3mm x 1320mm 13GA x 52"	1.2mm x 1550mm 18GA x 60"	2.3mm x 1550mm 13GA x 60"
Cutting angle	1° 40'	1° 40'	1° 40'	1° 40'	1° 40'	1° 40'
Stroke	-	20 Per/min	35 Per/min	28 Per/min	30 Per/min	26 Per/min
Motor Power	MANUAL	AIR	3 HP	5 HP	3 HP	5 HP
Front Supporting Range	600mm (24")	600mm (24")	600mm (24")	600mm (24")	600mm (24")	600mm (24")
Back Gauge Range	600mm (24")	600mm (24")	600mm (24")	600mm (24")	600mm (24")	600mm (24")
Shipping Weight	430kg	722kg	780kg	1200kg	1000kg	1390kg
Packing Size (mm)	1700 x 770 x 1350	1920 x 850 x 1360	1920 x 850 x 1360	1920 x 900 x 1450	2160 x 900 x 1350	2160 x 900 x 1450

MODEL	P-S014	P-S010	P-10014	P-10010	P-12014	P-12010
Capacity mild steel	2.0mm x 2050mm 14GA x 80"	3.5mm x 2050mm 10GA x 80"	2.0mm x 2540mm 14GA x 100"	3.5mm x 2540mm 10GA x 100"	2.0mm x 3100mm 14GA x 122"	3.5mm x 3100mm 10GA x 122"
Capacity stainless steel	1.2mm x 2050mm 18GA x 80"	2.3mm x 2050mm 13GA x 80"	1.2mm x 2540mm 18GA x 100"	2.3mm x 2540mm 13GA x 100"	1.2mm x 3100mm 18GA x 122"	2.3mm x 3100mm 13GA x 122"
Cutting angle	1° 40'	1° 40'	2°	2°	2°	2°
Stroke	26 Per/min	24 Per/min	22 Per/min	22 Per/min	20 Per/min	20 Per/min
Motor Power	3 HP	5 HP	5 HP	7.5 HP	5 HP	7.5 HP
Front Supporting Range	600mm (24")	600mm (24")	600mm (24")	600mm (24")	600mm (24")	600mm (24")
Back Gaug Range	600mm (24")	600mm (24")	600mm (24")	600mm (24")	600mm (24")	600mm (24")
Shipping Weight	1170kg	1730kg	2230kg	2700kg	2800kg	3200kg
Packing Size (mm)	2700 x 950 x 1400	2700 x 950 x 1450	3150 x 1000 x 1500	3270 x 1100 x 1500	3820 x 1100 x 1500	3820 x 1100 x 1500

• All specifications & design are subject to change without prior notice.



**FINTEK INDUSTRY COMPANY LIMITED**

P.O.BOX 1481 TAIPEI, TAIWAN.

TEL: +886-2-2523-6891 FAX:+886-2-2523-5419

Email: fintek.tw@gmail.com

