



SA-77NC-CL SA-115NC-CL

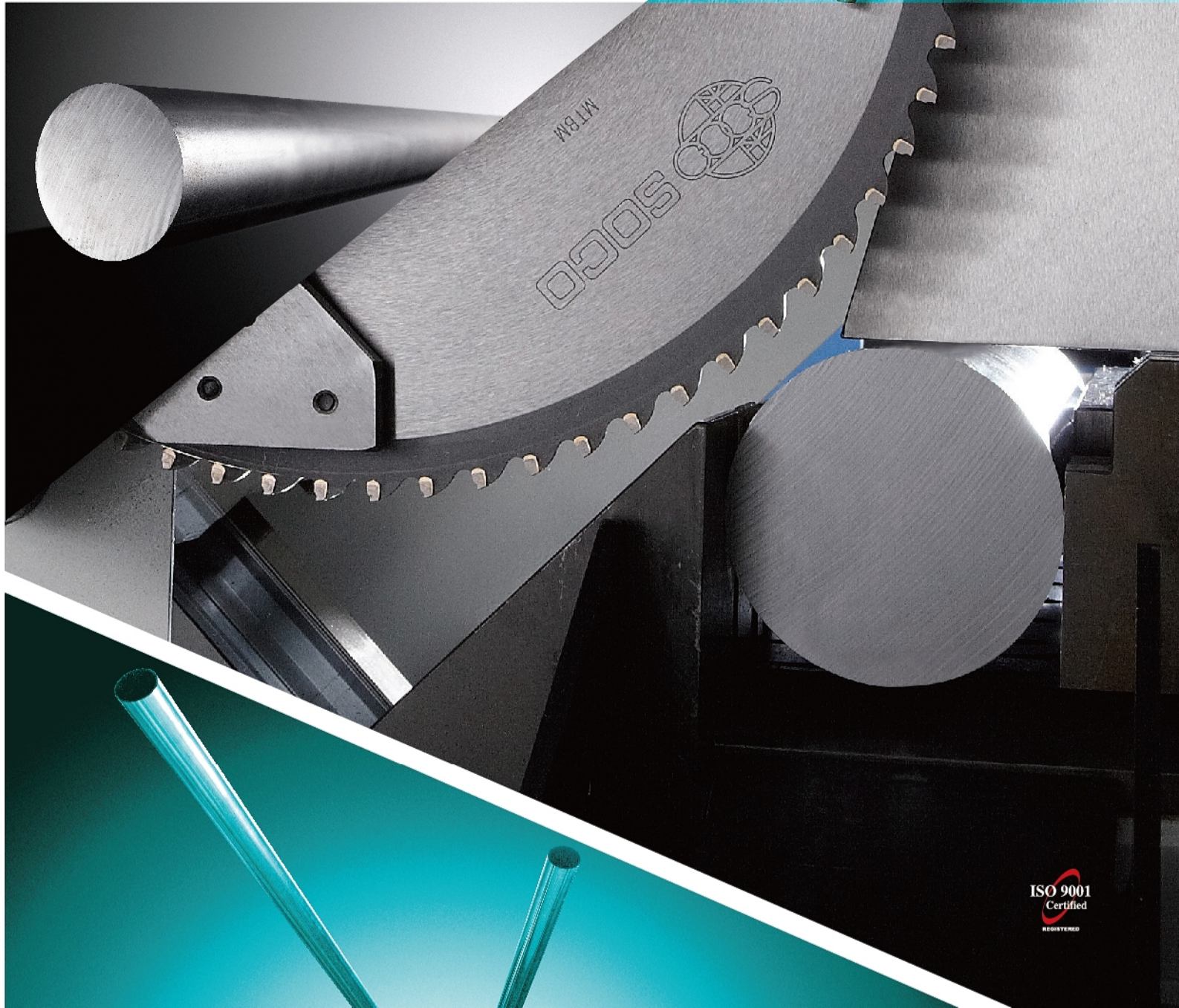
3 Electric Axis Tube & Bar Cutting Machines
Cutting Length from 10 ~ 3000mm, OD 10-115mm

70% Manpower Saving

SOCO Unique Bundle Loader (MBL6) and Unloader (CL)

Shortest Material Changeover Time (50% Time Saving)

Complete Solution
for Tube and Pipe



SA-77NC-CL

SA-115NC-CL

70% Manpower Saving

3 Electric Axis and Cutting Length from 10 ~ 3000mm

SOCO Unique Bundle Loader (MBL6) and Unloader (CL)

The new SOCO Tube and Bar Cutting Machine incorporates the newest technology with unparalleled functions. This revolutionary innovation brings you the unique loader (MBL6) and unloader (CL) – saving 70% labor and material changeover time (SOCO Global Patent). With capacity up to OD115mm and 3000mm cutting length in long length solid bar and tube, it is guaranteed to bring you continuous savings and production.

SA-77NC-CL2



SA-77NC-CL5

(Hydraulic Unloading System,
cutting length from 10 ~ 800mm)

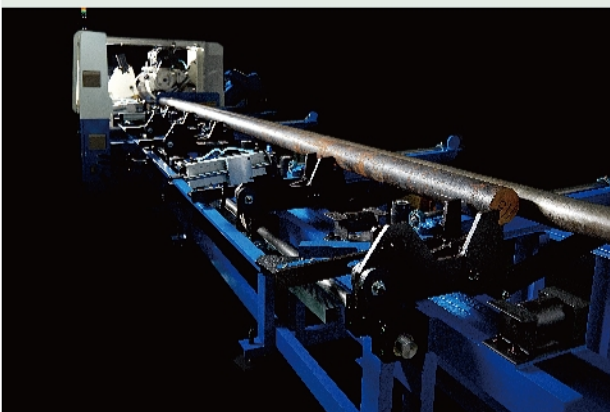
SA-77NC-CL2

(Electric Servo Unloading System,
cutting length from 10 ~ 2000mm)

SA-77NC-CL3

(Electric Servo Unloading System,
cutting length from 10 ~ 3000mm)

Working Pieces



Bundle Loading Magazine (MBL6)



Unloading System (CL) (CE type)

Savings & Production

- Using a thinner and smaller TCT Saw Blade, there is lower initial investment in blade and long term savings in material.
- HSS Saw Blades may also be used, with standard built-in settings and blade cooling system, for even more savings on tube cutting.

Flexibility

- U type (Ferrous TCT + HSS)
- NF / NFA type (Non-Ferrous / Aluminum)

Performance

- Superior Speed:

SA-77NC

- L = 10mm, OD10mm Mild Steel Bar, Cycle time = 4 secs
- L = 12.2mm, OD80mm Mild Steel Bar, Cycle time = 10 secs
- L = 230mm, OD42mm Mild Steel Bar, Cycle time = 7 ~ 8secs
- L = 1800mm, OD45mm Mild Steel Bar, Cycle time = 10secs
- L = 1800mm, OD45mm x 2t Mild Steel Tube, Cycle time = 7secs

SA-115NC

- L = 50mm, OD115mm Mild Steel Bar, Cycle time = 15 secs

- Dynamic Cutting:

- Fast Approach Speed
- Low Speed during blade entry
- High Speed after cutting through the tube's wall
- Lowest Speed at re-entry into tube's lower wall

- Long Blade Life:

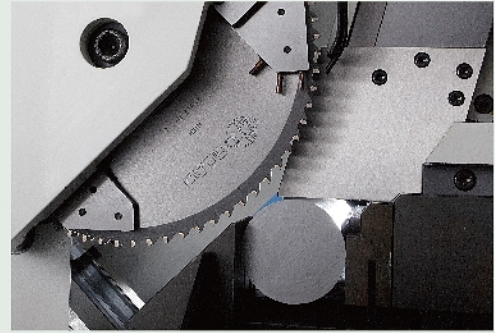
- Superior Designed Gearbox
- Electromagnetic Brake System
- "0" Backlash
- Accuracy and Precision
- Electric Servo Cutting, Feeding and Unloading
- Floating Feeding Carriage
- Cutting length precision: ± 0.05 mm ~ ± 0.1 mm (Cutting Length less than 200mm)
- Cutting length precision: ± 0.1 mm ~ ± 0.2 mm (Cutting Length 2000mm)

Automation

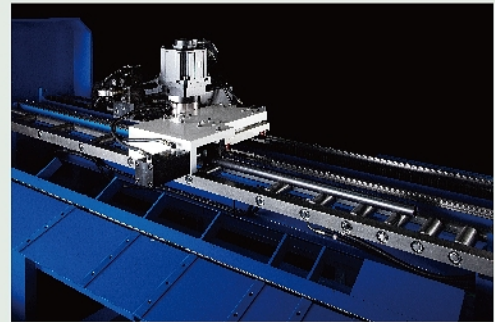
- Bundle Loader (MBL6) – Saving 70% labor and material changeover time
- 3 types Unloader for different cutting length. CLS Unloader (up to 800mm) , CL2 Unloader (up to 2000mm) and CL3 Unloader (up to 3000mm)
- Automatic Material Alignment : Automatically align all material before loading onto the machine
- Shortest Material Changeover Time (50% Time Saving) : While one stock bar is cutting, the next one is aligned and follows immediately behind to shorten changeover time
- Bundle capacity up to 4000kg

SOCO i2 Software

- SOCO Recommendation System for ideal settings based on material and cutting requirements.
- Intuitive and user friendly interface with Touch Screen System.
- Ability to program 5 cutting lengths per bar.



Electric Servo Feeding and Cutting



Electric Servo Unloading System-CL2 & CL3
(Cutting Lengths from 200mm to 3000mm)



Fashion and Safety Cover

SA-115NC



Specifications		SA-77NC-U-CL SA-77NC-NF-CL SA-77NC-NFA-CL	SA-115NC-U-CL SA-115NC-NF-CL SA-115NC-NFA-CL	
Cutting Capacity (mm)	Round Tube	Ø10 ~ Ø80	Ø20 ~ Ø115	
	Solid Round Bar	O.D. 10 ~ O.D. 80	O.D. 20 ~ O.D. 115	
	Solid Square Bar	10 x 10 ~ 55 x 55	20 x 20 ~ 80 x 80	
Main Machine	Saw Blade	Blades	TCT or HSS Saw Blade	TCT or HSS Saw Blade (U & NFA type) HSS Saw Blade (U type)
		Diameter (mm)	Ø220 ~ Ø285 x 2t	Ø360 x 2.5t (U type) Ø315 ~ Ø360 x 2.5t (NF & NFA type)
		Cooling	<ul style="list-style-type: none"> Water Soluble Cooling Lubricating Oil or Oil Mist System (U type) Oil Mist System or Cooling Air (NF & NFA type) (*) 	
	Cutting Head	Spindle Motor (Kw/p)	7.5/4 (U type) 5.5/4 (NF type) 5.5/2 (NFA type)	11/4 (U type) 5.5/4 (NF type) 5.5/2 (NFA type)
		Spindle Speed (rpm)	10 ~ 200 (U type) 1000 ~ 1500 (NF type) 2000 ~ 3000 (NFA type)	60 ~ 130 (U type) 100 ~ 1200 (NF type) 1500 ~ 2500 (NFA type)
		Cutting Axis	Electric Servo	
	Hydraulic System	Motor (Kw/p)	2.2 / 4	3.7 / 4
		Pressure (Kg/cm ²)	60	
	Chip Disposal		Automatic Chip Conveyor (U & NA type) Vacuum Chip Remover (NFA type)	
	Material Feeding System	Feeding Axis	Electric Servo	
Feeding Stroke (mm)		CLS type 10 ~ 800	CL2 type 10 ~ 2000(**)	CL3 type 10 ~ 3000(**)
Cutting Length (mm)		CLS type 10 ~ 800	CL2 type 10 ~ 2000(**)	CL3 type 10 ~ 3000(**)
First Crop (mm)		10 ~ 60		
Last Crop(mm)		60 + α (Cutting Length)		
Loading Magazine	Type	M6 Rack Type Loader (Standard) MBLL6 Bundle Loader (Optional)		
	Loading Capacity (Kg)	1700 (M6) / 4000 (MBLL6)		
Control	Interface	Touch Screen		
	Power	3 Phases, AC220V, 60Hz		
Dimension	L x W x H (mm)	9500 x 1900 x 1600 (CLS type) 11400 x 1900 x 1600 (CL2 & CL3 type)		
Weight (Kg)	Cutting Machine	3395		
	Loading Magazine	550 (M6) / 800 (MBLL6)		
	Unloader	CLS (400) / CL2 (500) / CL3 (600)		

Due to continuous improvements and designs; the manufacturer reserves the right to modify or make any changes of all models without notice.

(*) Optional Cooling Air Gun

(**) Dual Carriage Feeding



SOCO MACHINERY CO., LTD.

NO.3, JINGKE E. RD., NANTUN DIST., TAICHUNG

CITY 40852, TAIWAN

TEL : 886-4-23591888

FAX : 886-4-23592388

E-MAIL : sales@soco.com.tw



www.soco.com.tw