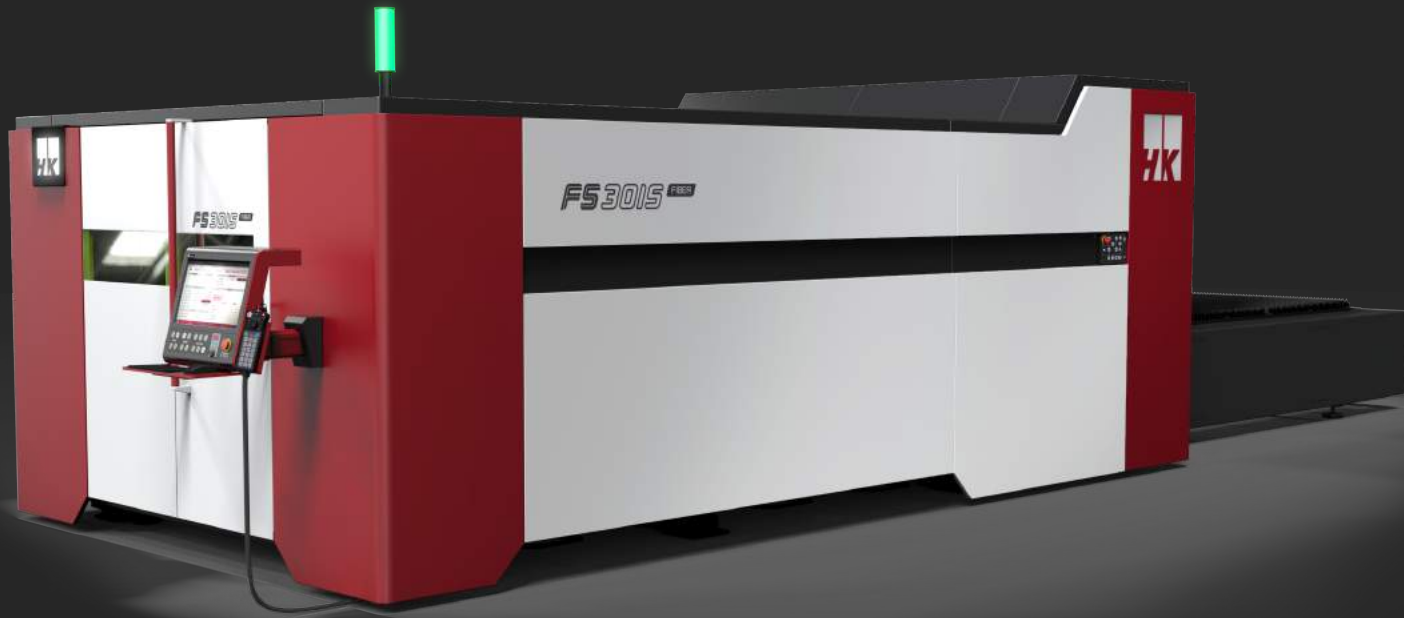


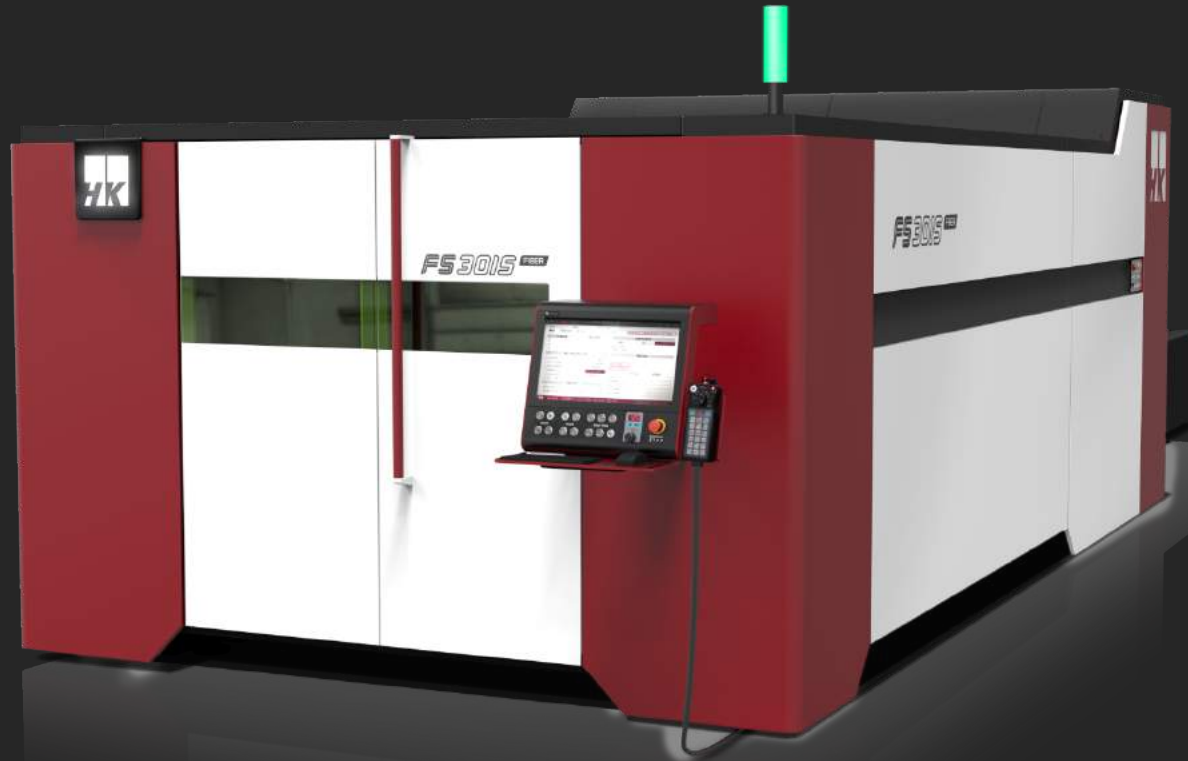
FS3015-2.5KW FALCON



FS3015-2.5KW FALCON



FS3015-2.5KW FALCON

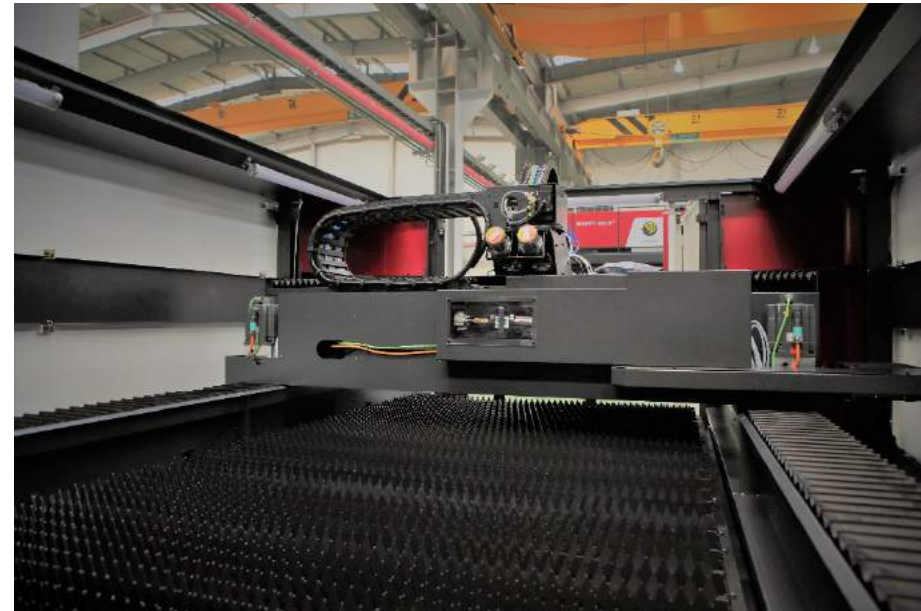


FS3015-2.5KW FALCON

Items	Specifications	Remarks
Model	FS3015F FALCON	
Laser power	2.5kw fiber	
Max cutting size	121" x 61"	
Positioning speed	4200 IPM	X and Y axis combined
Accuracy	+/-0.0039"	Over 120" travel
Repeatability	0.001"	
Controller	Siemens SINUMERIK 800 series	
Monitor	19" Touch Flat Touch Screen	
Cutting Head	Auto focus control	
Head sensing	Non-contact capacitive sensing	
Focal Length	5.90" (150mm FL)	
Assist gas port	Two(2) – Oxygen, HP Nitrogen	
Data communication	USB, Ethernet LAN	
Machine weight	34,000 lbs	
Electric Consumption	38KW	Including dust collector

FS3015-2.5KW FALCON

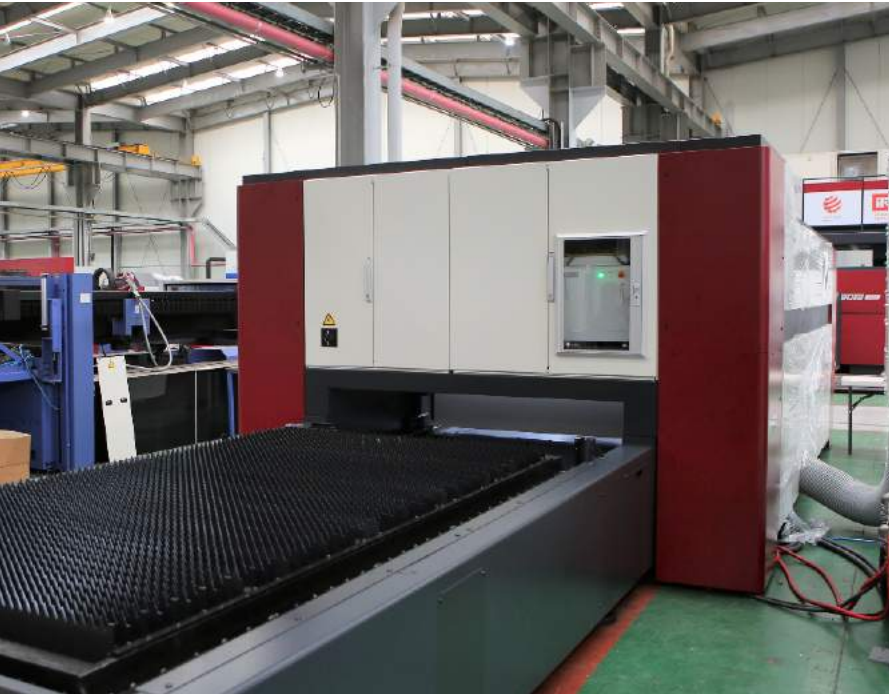
FS3015 short-gantry base frame



- Helical type Rack & pinion drive system
- Synchronized dual servo motors at the gantry
- Auto central lube system

FS3015-2.5KW FALCON

FS3015 short-gantry base frame



- Built-in electrical cabinet & fiber laser resonator

FS3015-2.5KW FALCON

HK Controller



- New design of HK control monitor & HMI unit
- 19" high-resolution flat touch screen with key board
- SIEMENS CNC platform with HK HMI application software
- Pendant operation panel
- Remote monitoring

FS3015-2.5KW FALCON



2016.06.10 14:56:23 SIMULATION Alarm [700404] LASER ALARM No. 36 INTERNAL GAS PRESS It is the simulation mode

Mode JOG Status Reset Program 0

Main Function Gap control Beam/Gas Parameter Pre View MCPanel

MCS		Working Position	
X	0.000	X	0.000
Y	0.000	Y	0.000
Z	0.000		

Contour Search		
Off	On	Part
Part no.	0	0
Contour no.	0	0

NC functions on/off		
Leadin	Remnant Cut	Z Gap Off Cutting
Edge Detection	Power Modulation	Flying Engrave
Microweb	Circular Piercing	Multi Origin
Nozzle Cleaning	Reference Pos.	Load CDB
Service	Beam Off	AUTO MODE
Repeat		

CDB Name		
FCOPPO010		
Cutting type change	No cutting	
Piercing type change	No piercing	

	Set Point	Real Point
Focus	0.0	
Power [w]	0	0
Feed	0	0
O2 [Bar]	0.0	0.0
N2 [Bar]	0.0	0.0

Operation on time			
Program cycle time	0	Min	0
Beam on time	0	hr	0

WORK DATA SCHEDULE SETUP HISTORY Origin Job File

2016.06.29 11:26:49 SIMULATION Alarm [700851] BRC 에러 It is the simulation mode

CDB Name FMGHR0200 Lens 5.0 Nozzle TP30

General Cut Piercing Pre-cut Pre-burn

Focus Home MAG 175

Cut data	Unit	Large	Midium	Small	Special	Leadin
Feed	mm/min	900	700	500	100	500
Power	w	4500	3000	2500	6000	4500
Frequency	Hz	5000	5000	5000	10	5000
Min. frequency	Hz	2200	3500	1000	10	5000
Gas (1=O2, 2=N2, 3=Air)		1	1	1	1	1
Gas pressure	bar	0.5	0.5	0.5	0.5	0.5
Gap	mm	0.500	0.500	0.500	0.500	0.500
Pulse width	msec	0.2	0.2	0.2	60.0	0.2
Kerf width	mm	0.350	0.350	0.350	0.350	0.350
Focus	mm	7.0	7.0	7.0	7.0	

WORK DATA SCHEDULE SETUP HISTORY CDB Save to CDB

FS3015-2.5KW FALCON

Connection with Automation

- Prep for SMART-CELL
- Not available for SMART-TOWER

FS3015-2.5KW FALCON



(Feed rate: ipm)			4000 Watts	3000 Watts	2500 Watts	
Material	Thickness		ProCutter	ProCutter	FALCON	
	mm	inch	150 FL	150 FL		
Aluminum	1.00	0.040	N2	1650	1250	1100*
	2.03	0.080	N2	850	450	394*
	3.05	0.120	N2	276	236	170*
	4.06	0.160	N2	158	138	110*
	6.10	0.240	N2	75	59	40*
	7.87	0.310	N2	40	28	
	9.91	0.390	N2	24	16	
	11.94	0.470	N2			
Mild Steel	1.00	0.040	N2	1450	1380	900
	2.03	0.080	N2	709	630	450
	3.05	0.120	N2	315	300	200
	4.06	0.160	O2	134	134	110
	6.10	0.240	O2	110	98	94
	7.87	0.310	O2	90	79	
	9.91	0.390	O2	74	59	
	11.94	0.470	O2	63	51	47
	16.00	0.630	O2	34	33	31
	19.81	0.780	O2	28		
Stainless	1.02	0.040	N2	1653	1340	1102
	2.03	0.080	N2	787	630	472
	3.05	0.120	N2	354	295	197
	4.06	0.160	N2	236	157	145
	6.10	0.240	N2	87	71	59
	7.87	0.310	N2	43	35	32
	9.91	0.390	N2	30		
	12.70	0.500	N2			

** Slight burr may occur at the backside of the material.