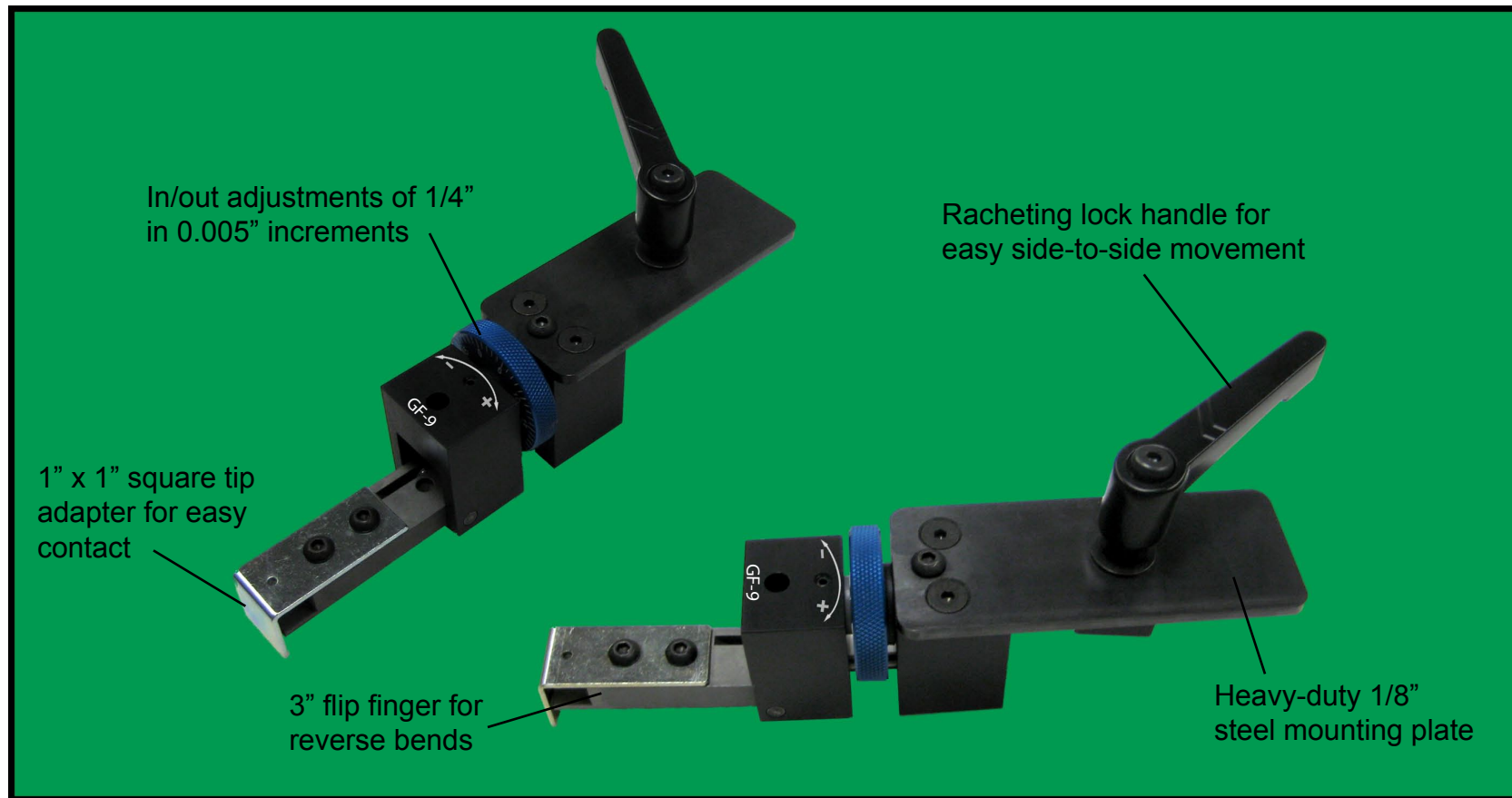


# GF-9 LOW-PROFILE FINGER



**Part #:** GF-9

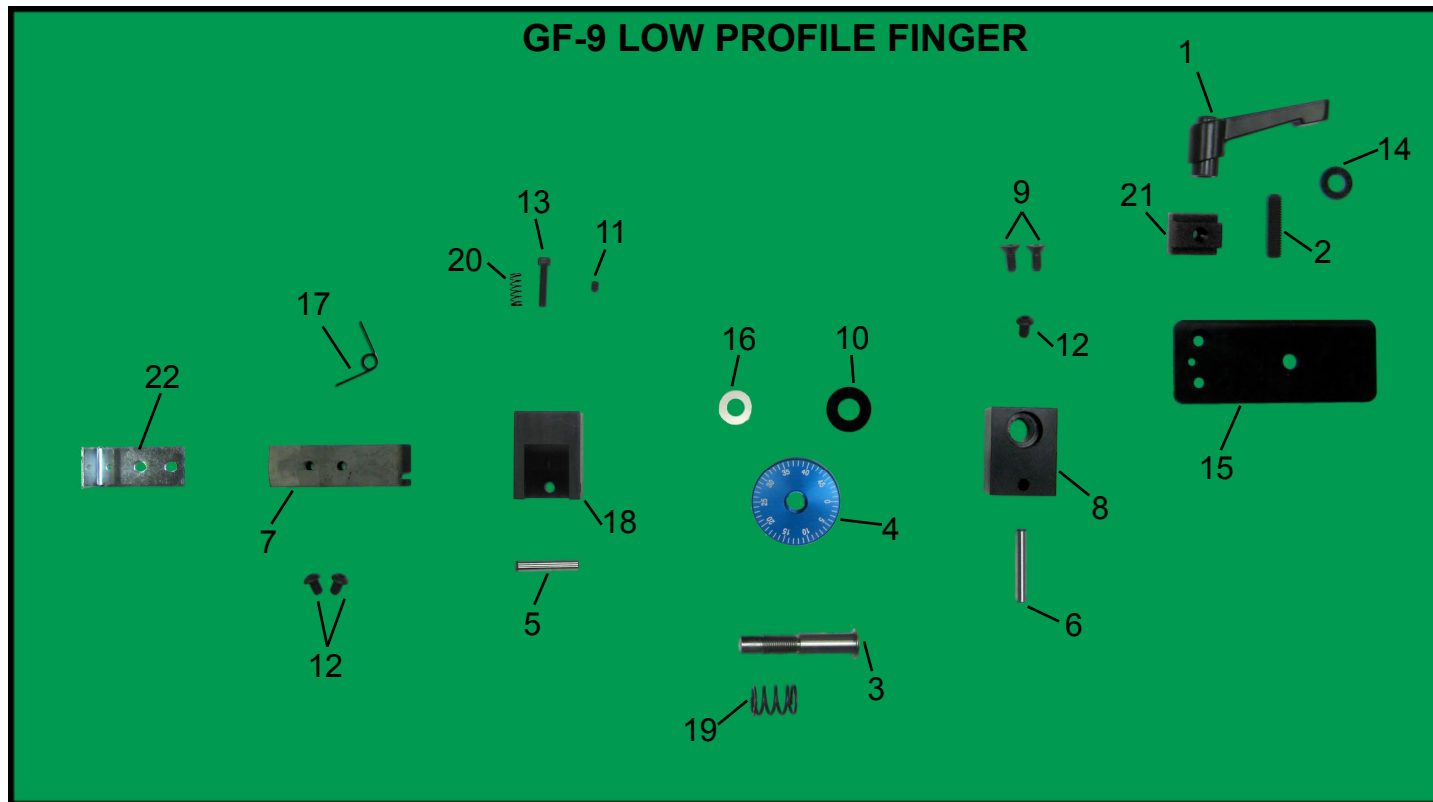
**Supplied on:** Up-acting pressbrakes.  
(2) Fingers per system.

**Operational Features:** Low profile design positions gauge surface at lower face of gauge bar on same plane as work blocks. Spring-loaded finger dampens vibrations.

**Mounting:** Mounts on top of gauge bar using ratcheting lock handle. References against face of gauge bar.

# AUTOMECH

AUTOMECH, INC.  
Box 519 • 82 Calvary Street, Waltham, MA 02453  
Tel. (781) 389-3403 • Fax. (781) 899-5708  
[www.automech.com](http://www.automech.com)



### PARTS LIST

ITEM #	PART #	DESCRIPTION	ITEM #	PART #	DESCRIPTION
1	28032	RATCHET HANDLE	14	3/8" F/W SAE	FLAT WASHER
2	3/8 - 16 X 1 1/2" SSS	SOCKET SET SCREW	15	99080A	MTG PLATE
3	99073	ADJ SCREW	16	.450 ID X .690 OD X .030 T	NYLON WASHER
4	99079	ADJ DIAL	17	LT-038G-1-L	TORSION SPRING
5	1/4 X 1 1/2"	DOWEL PIN	18	99075C	SLIDE BLOCK
6	1/4 X 1 3/4"	DOWEL PIN	19	12015	COMP. SPRING
7	99071C	FINGER	20	6044	COMP. SPRING
8	99072A	FIXED BLOCK	21	CL-16-TN	T-NUT
9	1/4 - 20 X 5/8 FHCS	FLAT HEAD CAP SCREW	22	47713A	TIP ADAPTER
10	AI1062110A1	1/4 FLAT WASHER			
11	10 - 32 X 1/4" SHCS	SOCKET SET SCREW			
12	1/4 - 20 X 3/8" BHCS	BUTTON HEAD CAP SCREW			
13	10 - 32 X 1 1/4 SHCS	SOCKET HEAD CAP SCREW			

Tel. (781) 389-3403  
 Fax. (781) 899-5708  
 www.automec.com



82 Calvary Street, Waltham, MA 02453