



Complete
Solution for
Tube and Pipe

F / PV / AC SERIES

Sawing Machines with Mitre Cutting
pneumatic and hydraulic operation



F series / Manually Operated

PV series / Automatic Air Clamping Vise

AC series / Automatic Cutting & Air Clamping Vise

F / PV / AC series

Sawing Machines with Mitre Cutting

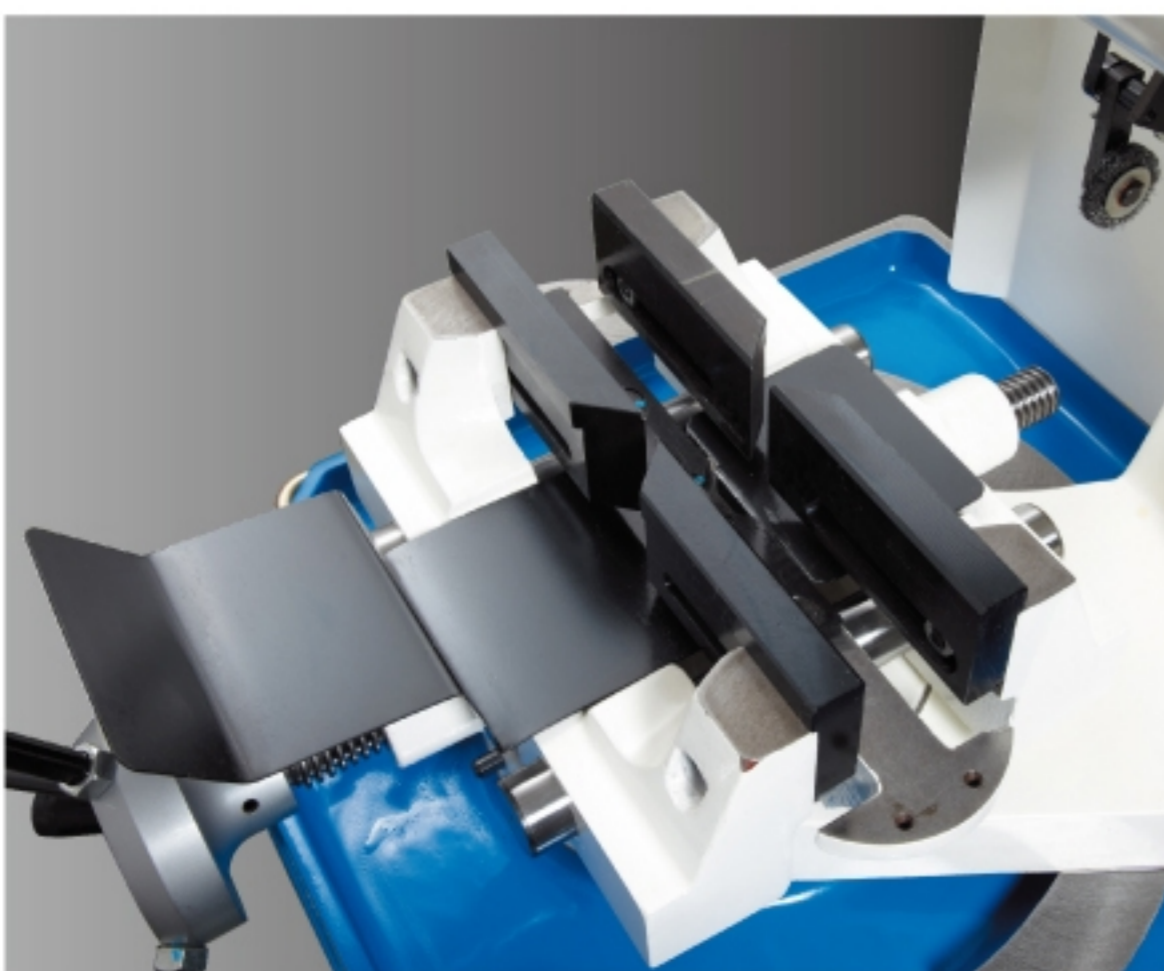
Machine Features :

MC-275F/PV/AC

MC-315F/PV/AC

MC-370F/PV/AC

- Burr Free & Less Dust:
Self-Centering vise with two sides clamping to solidly hold the work piece and ensure a smooth and burr free cutting surface.
Low operation noise and low pollution working environment
- Fast, Precision & Clean:
Compared to Band Sawing, Circular Sawing is much more economical, faster in cutting, more precise, and cleaner finish
- Mitre Cutting:
The Saw Head can be swiveled either direction at various degrees for mitre cutting, providing excellent precision in angle accuracy
- Cooling System:
Equipped with electrical cooling pump and a large coolant tank to ensure excellent working temperature on the Saw Blade and the Work Piece, as well as a smooth cutting surface and longer blade life
- Length Stopper:
Standard with adjustable length gauge and stopper
- Optional 2 part clamps for thin wall tubing
- Optional Roller Table:
RTI: Roller type material input stand
RTO+MS: Roller type material output stand+adjustable length and stopper



Self-Centering Clamping System

F

Manually Operated

MC-275F / MC-315F / MC-370F



MC-275F



MC-315F

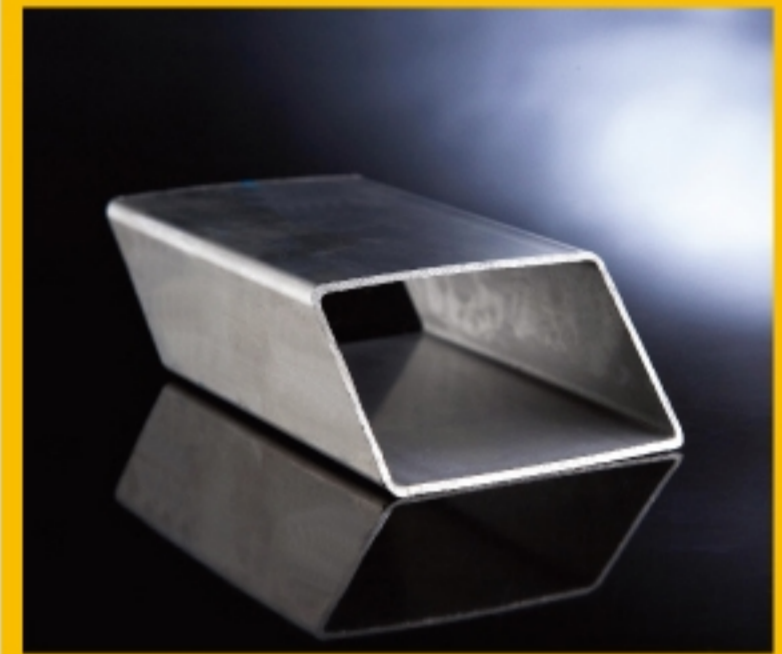
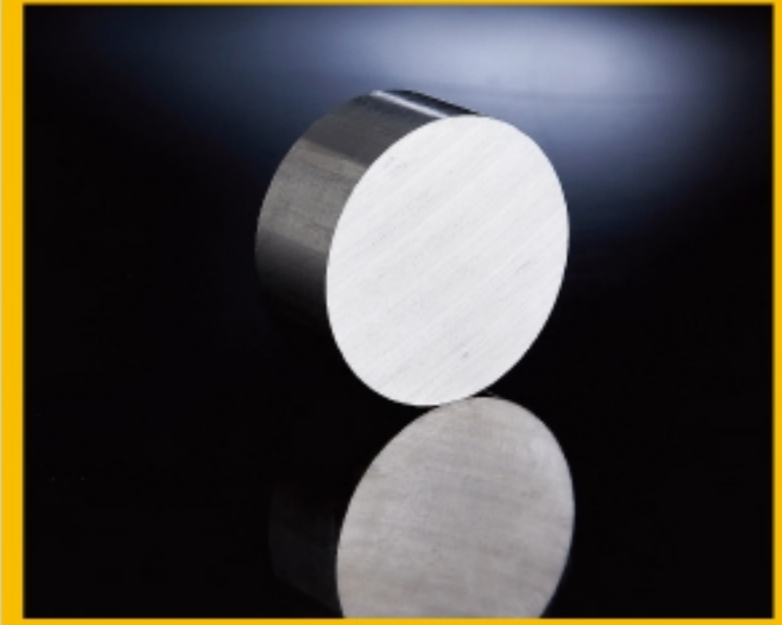
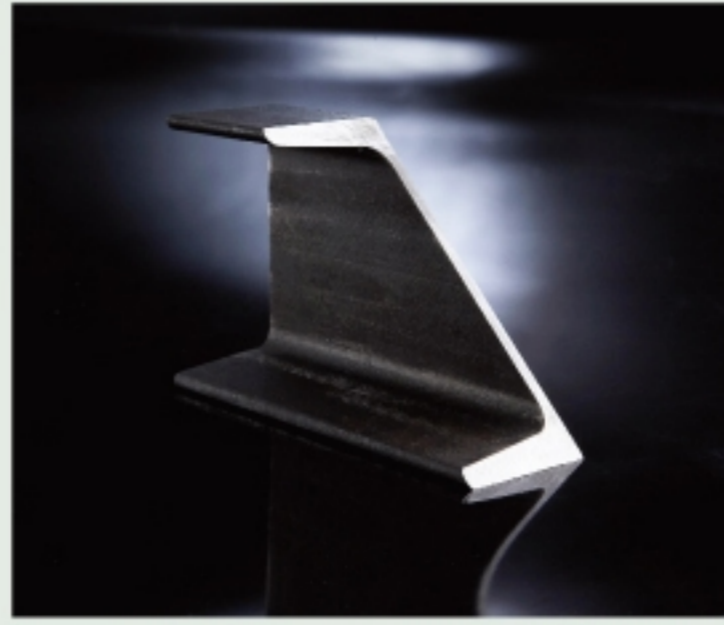


MC-370F

AC Automatic Cutting & Air Clamping Vise MC-275AC/ MC-315AC / MC-370AC



MC-275AC



MC-315AC



MC-370AC

PV Automatic Air Clamping Vise MC-275PV/ MC-315PV / MC-370PV



MC-275PV

Specifications / Model		MC-275F/PV/AC			MC-315F/PV/AC			MC-370F/PV/AC											
Cutting Angle		45°			90°			45°			90°								
Cutting Capacity (mm)	○ Round Tube	Ø80			Ø80			Ø100			Ø100			Ø115			Ø115		
	□ Square Tube	70 x 70			75 x 75			85 x 85			90 x 90			100 x 100			110 x 110		
	└ Angle Bar	70 x 70			75 x 75			85 x 85			90 x 90			100 x 100			110 x 110		
	▭ Rectangular Tube	70 x 80			75 x 90			85 x 85			85 x 110			100 x 100			110 x 110		
	● Solid Round Bar	Ø 25			Ø 38			Ø 45			Ø 55			Ø 50			Ø 75		
	■ Solid Square Bar	25 x 25			38 x 38			40 x 40			50 x 50			50 x 50			75 x 75		
Mitre Cutting		45°-90°-45°						30°-90°-45°						30°-90°-45°					
Main Motor	A	2&1.4HP , 2/4Poles						3&1.5HP , 2/4Poles						3&2HP , 2/4Poles					
	B	1.4&1HP , 4/8Poles						1.4&1HP , 4/8Poles						2&1.4HP , 4/8Poles					
Arbor RPM (60Hz)	A	120 / 60						100 / 50						88 / 44					
	B	60 / 30						50 / 25						22 / 11					
HSS Saw Blade Size (mm)		Ø250 / Ø275						Ø275 / Ø300 / Ø325						Ø300 / Ø350 / Ø370					
Cooling System (HP)		1/8						1/8						1/8					
Pressure Air (Kg)		PV & AC						PV & AC						PV & AC					
		4 ~ 6						4 ~ 6						4 ~ 6					
Weight (Kg)		F	PV	AC	F	PV	AC	F	PV	AC	F	PV	AC	F	PV	AC			
		180	190	220	200	210	240	260	270	300									
Dimension (mm) (L x W x H)		1000 x			1100 x			1100 x			1250 x			1000 x			1300 x		
		750 x			850 x			850 x			850 x			850 x			850 x		
		1610			1610			1610			1610			1610			1610		

Due to continuous improvements and designs; the manufacturer reserves the right to modify or make any changes of all models without notice.



SOCO MACHINERY CO., LTD.

#7, 14TH RD. TAICHUNG INDUSTRIAL PARK.

TAICHUNG TAIWAN

TEL : 886-4-23591888

FAX : 886-4-23592386

E-MAIL : sales@soco.com.tw

www.soco.com.tw